

January 2010

Volume 3 Issue 5



Inside this issue:

<i>Wayne Roberts</i>	1
<i>News and Notes</i>	2
<i>The Library Lady</i>	2
<i>John Carlsen</i>	2
<i>Show Table Results</i>	3
<i>Philadelphia Flower Show</i>	4

Next Meeting January 12, 2010

Speaker: *Wayne Roberts - Roberts Flower Supplies*

Topic: *History of Orchid Potting Media*

Wayne Roberts has been growing orchids for over 36 years, when he and his wife Nancy purchased 3 orchids as a remembrance of their Florida honeymoon, of which two died soon after in their very drafty windowsill conditions. Determined to succeed, they built a light cart, then multiple light carts, then a lean-to greenhouse, then a two-story greenhouse, and lastly an additional free-standing model they dismantled from 120 miles away and re-erected over a period of 3 years. They started Roberts Flower Supply over 20 years ago as a family owned business, operated from their home, greenhouse, and storage facilities. It began on a small local scale, as a cooperative attempt to reduce costs by combining media purchases with other growers to save money, and gradually grew to the full-time operation it is today. As Wayne listened to experienced growers and learned about their successes and failures with various potting mixes, he began to develop mixes that were unique to the market and successful with most growers. He enjoys sharing his knowledge with others about many types of orchid media. Wayne has degrees in Chemistry and Physics. He had a lot of chemical mixing experience in earlier jobs that he uses in making his own orchid mixes. He is a member of the Native Orchid Society and is passionate about conserving and propagating endangered native plants of all kinds, especially orchids. His collection includes all the American cyp plus 15 other natives and over 30 hardy Asian orchids.

Roberts Flower Supply offers orchid mixes, fir bark, coconut husk chips, diatomite, coir, wire supports, wire hangers, orchid pots, orchid baskets, granulated charcoal, sponge roc perlite, long fiber sphagnum moss, plant lights, fertilizer, pesticides, humidity trays, fungicides, greenhouse material, Cypripediums, cyp. hybrids & other native orchids.

Check out Wayne's website at www.orchidmix.com to find out details of what he sells. Pre-orders may be sent to him by mail, phone or to rfs@orchidmix.com and need to be received by January 7 to make sure he can bring them. For delivery to the meeting, 15% of the supply items total will be credited to the club to reduce the transportation cost. If enough of us order, it would cost the club very little or even nothing to have him come! Think ahead for what you will be needing come spring and stock up!

Meeting Schedule

• 7:00—7:30

Show Table Entries

• 7:30—8:00

Show Table Review/
Refreshments

• 8:00—8:15

Business Meeting

• 8:15—9:00

Program

• 9:00—9:25

Show Table Commen-
tary, Raffle, and Door
Prizes

THE DELAWARE ORCHID SOCIETY

Officers

Scott Cunningham, President
John Rogan, Vice-President
Joel Balogh, Treasurer
Dave Emerson, Secretary
Brad Billet, Editor

Board of Directors

Frank Tait
Dan Gawiak
Marie-Christine Viallet
Barry Wolstenholme
Vera Lee Rao
Janet Berhardt
Fr. Jerry Ozlanski, Past President

Committee Chairs

Program	Mali Rao
Library	Grace Husted
Show Table	John Rogan
Membership	Vera Lee Rao
Hospitality	Lori Weaver
	Maryann Ozlanski
	Vicki Gawiak

News and Notes...

The Library Lady....

The DOS Library has a new book...Understanding Orchids by William Cullina which has garnered high praise. It includes information on where and how to grow orchids in various locations in the home with useful facts about temperature, humidity and potting--with an excellent description of various potting materials.

Other books at the Library Table that will provide helpful information on potting and mixes are:

Orchid Growing Basics by Dr. Schoser

Orchids, the Complete Grower's Guide by the Rittershausens

Four Seasons of Orchids by Allikas and Nash

Complete Guide to Orchids

Since we all face the basic and important task of repotting our orchids early in the year, why not increase your knowledge about how to best do it...and at the same time perhaps we can increase the number of beautiful flowers that we all love.

Come see...

The Library Lady



In Memoriam:

As previously mentioned in a newsletter earlier in the year, John Carlson, a long time member of DOS passed away in 2007. In his will, John left DOS a bequest of \$10,000 which has recently arrived into our account. We wish to thank John, in absentia, for this bequest and we ask our current and past members to remember his many years with our society fondly. Although he was not as active in the DOS in the last few years, many of us remember him for his beautiful Cattleyas, and his quiet advice on how to become a better grower. John spent his final and happy years at Kendall-Crosslands, whose Director graciously provided us with a photo of him for us to help remember him.



The Board of Director of DOS have pledged to put John's bequest to good use. Our goal this year is to increase our membership, make our meetings more exciting (speakers, free plants, etc), as well as complete other activities which support our mission. If any of our members have anything they would like to add in remembering John, or would like to help with suggestions on how best to use these funds, please feel free to contact Scott Cunningham.

Meetings are held the second Tuesday of each month (except July and August) at Emmanuel Presbyterian Church, 1006 Wilson, Wilmington at 7 PM. Visitors are always welcome.



DECEMBER SHOW TABLE

PLANT

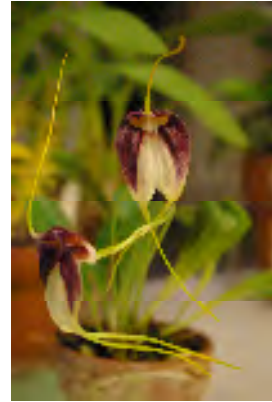
GROWER

Greenhouse

Masd. rex	Vera Lee & Malli Rao
Masd. mendozae	“
Masd. jarae	“
Masd. tonduzii	“
Masd. schroderiana	“
Masd. brachyuran	“
Masd. garciae	“
Den. niveum	Mary Ann Ulman
Blc Haadyal Delight	“
Epi. Malanoparphrea	“
Slc Rimfire X L. briegeri	“
Eplc. Volcano	“
Onc. Twinkle	“
Epi. Jubilee	“
Neostylis Lou Sneary	“
Ascda. Susan Ong	“
Max. phoeranthaera	“
Ornithocephalus bicornis	John Rogan
Blc. Chia Lin	“
Lc. Adolph Hecker	“
Brassavola nodosa	Steve Chang
Vanda coerulea	“
Ascda. Crownfox Red	“

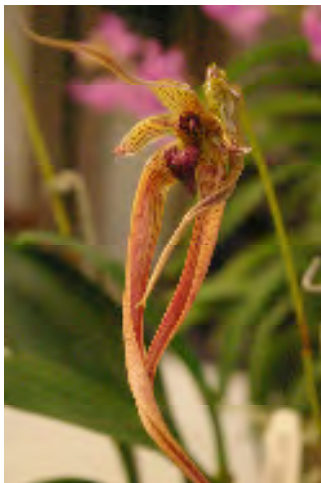
Windowsill/Lights

Blc. Mem. Crispin Rosales	Frank Tait
Unknown Brassia	Dan Gawiak
Paph. Maudiae	Grace Husted



**SILVA ORCHIDS
ANNUAL OPEN
HOUSE
January 28-31
10-5 PM
Brunch on Sunday
More info:
www.silvaorchids.com**

**Don't forget to bring
your blooming babies
in for all to enjoy at the
show table!**



Brassavola nodosa

Delaware Orchid Society

c/o 505 N. DuPont Road
Wilmington, DE 19807

We're on the web!

www.delawareorchidsociety.org



The 2010 Philadelphia International Flower Show - Passport to the World

The upcoming Flower Show is going to be a special one on many levels. Most obvious is the name change. In 2010, PHS will present the Philadelphia International Flower Show, an acknowledgement of the Show's global scope, participation, and reputation, which have been growing for years.

The internationally inclusive Flower Show is also meant to include you, the first-time exhibitor with one plant or the experienced exhibitor with many entries. Competing in the Hortcourt, the mini-Olympics of horticulture, is an experience you'll never forget!

For easy guidance on how to be a part of the 2010 Show, you can go to the official Show web site and download the Exhibitor's Guide and the step-by-step User's Guide for registering your plants online. Preregistering your plants by January 31st is strongly encouraged so that your official entry cards can be prepared in advance. In addition, you will receive a mailing from PHS in advance of the Show with instructions for where and when to bring your plants on entry days.

To go directly to the Flower Show site to view the Exhibitor's Guide and User's Guide, go to:
<http://www.theflowershow.com/Exhibits/ccinfo.html>

Delaware Orchids *Continued in Quality Since 1957*

22nd Annual Open House

Thursdays January 28th - Sundays January 31st 2010
10:00am - 3:00pm

Our large selection of blooming orchids
Many more orchid varieties
Once again we welcome
James Rose of Cal-Orchid
with a selection of orchids from around the world

Back by popular demand
Culture Talks Friday & Saturday

Sunday brunch 11:00am - 2:00pm

Check our website for open house updates @ www.dsoorchids.com

Visit our website for all directions
813 Old World Way, Wilmington, DE 19802 302-638-1888